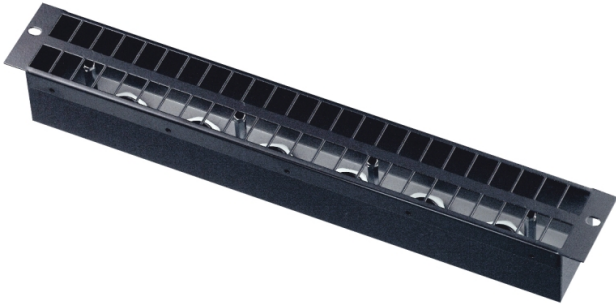


19" Hotpatch jack panel

1.5U, not assembled, for 48 sockets, without rear cover

Components for individual DIY projects



Sample picture

The 1.5U/19" jack panels are available in two versions: with six PG21 cable glands on the rear cover or without a rear cover. The housing is supplied without jacks.

- Every single component is available for individual DIY projects.
- 2-pin hotpatch plugs (phase/neutral), 16A/250V power rating
- Patch panels are available either with or without rear cover.

Technical specifications

Net weight	1.2kg
Dimensions	483 x 88 x 85mm

Article

150502	19" Hotpatch jack panel, 1.5U, not assembled, for 48 sockets, without rear cover
150531	19" Hotpatch jack panel, 96, 4.5U, not assembled, for 96 sockets, without rear cover

150530	19" Hotpatch jack panel, 144, 4.5U, not assembled, for 144 sockets, without rear cover
--------	--

Accessories

150504	Rear cover, double, for patch panel 2 x 1.5U, 12 x PG21 strain relief	Major
--------	---	-------